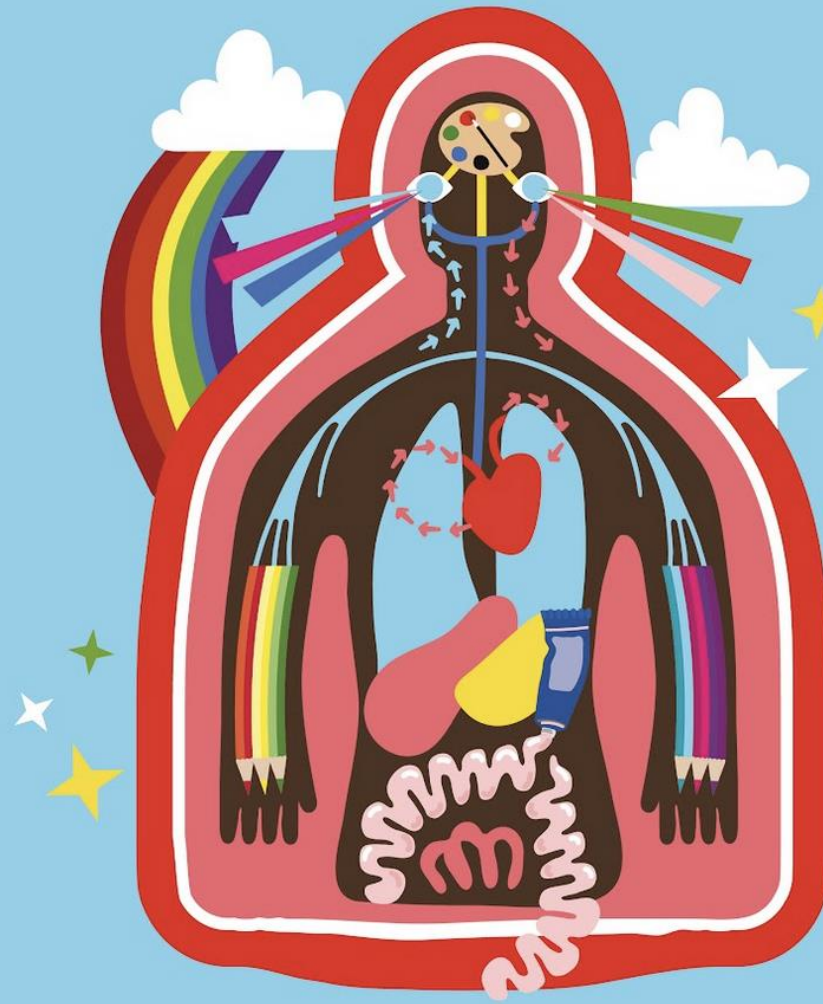




THE 2022<sup>®</sup>  
**BIG  
DRAW  
FESTIVAL**



**COME  
BACK  
TO  
COLOUR**



Starting this week!!!

# THE 2022 BIG DRAW FESTIVAL

## Get ready to get CREATIVE!



Over the next two weeks there will be lots of inter-curricular workshops running at lunchtime to get you drawing more and thinking about colour!

You will also create a mini artwork that will become part of a whole school collaborative piece of work. Make sure you **GET INVOLVED!**

# THE 2022 BIG DRAW FESTIVAL

Join in with one of our events:

DATE	ACTIVITY	ROOM	STAFF
Tue 11th Oct	Colourful Language	1E3	Ms Claydon
Wed 12th Oct	Postcard Prompts	GN4	Mrs McAlpine
	Colour and the Queen	GN5	Mrs Hope
Fri 14th Oct	Musical Drawings	1W10	Mr Bunting
Mon 17th Oct	Chromatography	GW6	Miss Kennedy
	Mathematical Drawings	1E10	Miss Jones
Tue 18th Oct	Colourful Language	1E3	Ms Claydon
	Mathematical Drawings	1E10	Miss Jones
Wed 19th Oct	Postcard Prompts	GN4	Mrs McAlpine
	Colour and the Queen	GN5	Mrs Hope
Thurs 20th Oct	Paint Chip Poetry	1W7	Mrs Cox
Fri 21st Oct	Drawing with Light	Activity Studio	Mrs McAlpine



# Come Back to Colour


“This year’s theme aims to encourage us all to try - to capture, to define, to crystallise and to celebrate how colour creates joy in so many ways – big and small. The dazzling beauty of all that is good, kind, and full of light and hope in our world.”

**- Kate Mason, Director of The Big Draw**



# WHY IS DRAWING IMPORTANT?

#THEBIGDRAW



# The Pantone Postcard Project:

Each student and member of staff has been given a postcard, on which to create a piece of artwork. You will need to respond to the colour you have been given and it could be with a...

Painting  
Drawing  
COLLAGE  
PHOTO  
Textile  
DIGITAL  
MIXED-MEDIA







Your mini artwork can be of or about anything and should show off and use the colour square that you've been given. Be creative, but if you get stuck come to one of the **Postcard Prompt** workshops.







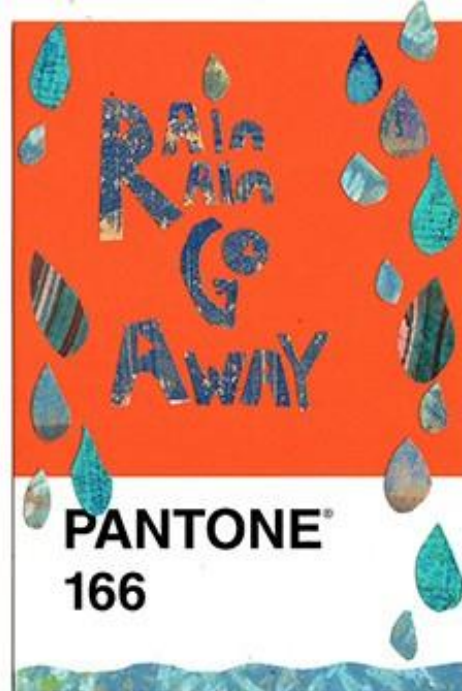
**PANTONE®**  
100



**PANTONE® 18-4530**  
Celestial



**PANTONE® 17-5722**  
Bottle Green



**PANTONE®**  
166



**PANTONE® 14-0852**  
Freesia



**PANTONE® 18-4330**  
Swedish Blue



**PANTONE®**  
583



**PANTONE®**  
9180

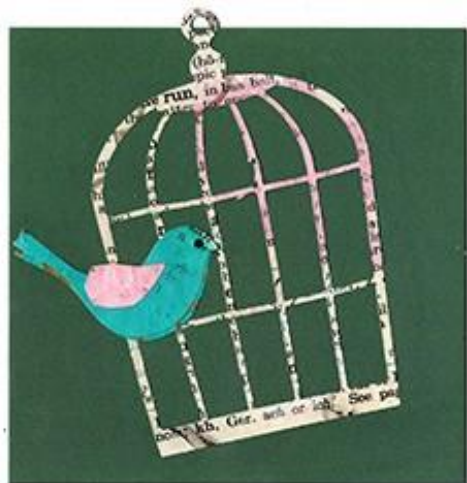


**PANTONE®**  
9041



**PANTONE®**  
5405





**PANTONE®**  
5555



**PANTONE®**  
7654



**PANTONE®**  
277



**PANTONE®** 18-5621  
Fir



**PANTONE®**  
485



**PANTONE®** 11-4804  
Lightest Sky



**PANTONE®**  
152



**PANTONE®** 12-0727  
Sunshine



**PANTONE®**  
214



**PANTONE®**  
677





**PANTONE® 12-0313**  
Seafoam Green



**PANTONE® 19-3935**  
Deep Cobalt



**PANTONE® 7720**



**PANTONE® 13-0850**  
Aspen Gold



**PANTONE® 394**



**PANTONE®**  
Cool Gray 7



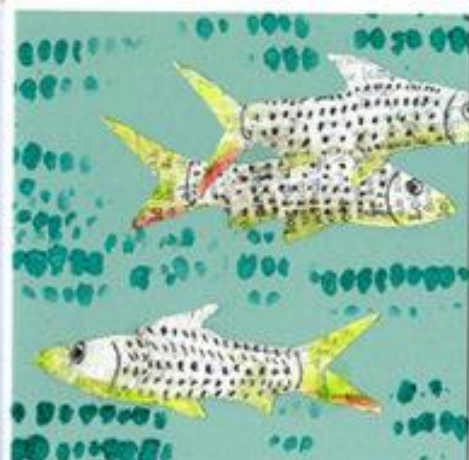
**PANTONE®**  
600



**PANTONE®**  
5125



**PANTONE® 12-5204**  
Morning Mist



**PANTONE® 15-5210**  
Nile Blue









**PANTONE® 17-5722**  
Bottle Green



**PANTONE®**  
7654

*or Monif*



**PANTONE®**  
1797




All postcards will be displayed in a whole school exhibition. Postcards are due by Monday 31<sup>st</sup> October. Please put mini artworks in the letter box in the art and DT department, with your name and tutor group written clearly on the back. Good Luck!!!

# Get Involved...



English & Literacy



Music



Maths



PE, Dance & Fitness



Science